

# SPACE AGE SHELVING

(905) 542-0353

info@spaceageshelving.ca



## Installation Guidelines

*"Step one, you're almost done!"*

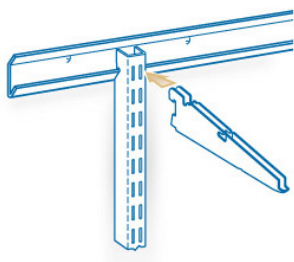
- 1) Option 1: Measure up \_\_\_\_ from the baseboard and use a level to draw a level line at this height. Place the rail on the wall so the line is visible through the mounting holes. Circle each mounting hole along the level line. There is no need to align the holes with studs.

Option 2: Place the rail on the wall at the ceiling. Circle each mounting hole along the level line. There is no need to align the holes with studs.

- 2) Using a 5/32" drill bit, make a pilot hole at each mark, making sure to drill the full depth of the screw (3"). If you hit a stud, use the screw included in the anchor package. There is no need to use the anchor.

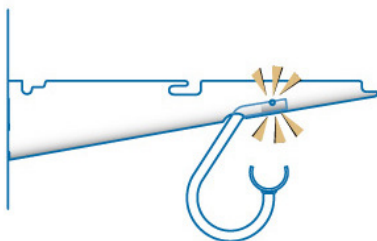
If you do not hit a stud, make the pilot hole bigger with a 9/32" drill bit and insert anchors into holes. Do not twist or turn the anchors.

- 3) Place rail over holes and tighten the screws with a drill or by hand. **IMPORTANT:** Allow screw to turn 6-8 full rotations after it is flush to the rail. Place cover stickers over each screw head if desired.



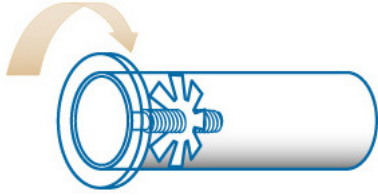
### Uprights and Brackets

- Insert uprights into rails at appropriate spacing intervals (see diagram)
- Insert brackets into uprights at appropriate shelf heights (see diagram)
- Common heights are 84" for top shelf and 42" for middle shelf



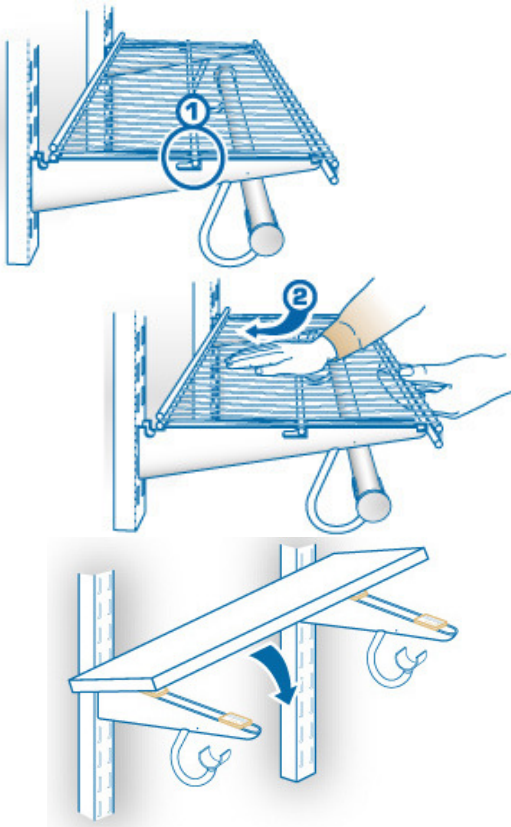
### Rod Clips

- Rod clips are placed into brackets prior to installing shelves
- Insert rod clips into the bracket and pull downward until you feel it snap into place



### Chrome Rod and Rod Stops

- Spin the flange on the rod stop until it is half way up the threaded shaft
- Push rod stop onto chrome rod, then twist the stop until it tightens into place
- Place completed rods atop rod clips and pull downward until they snap into place.

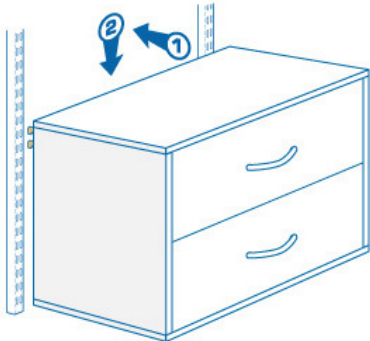


### Shelving (Ventilated)

- Lay shelf onto brackets with center shelf rod positioned atop center bracket notch (1)
- Push down on the center shelf rod, then lift the front edge and slide the shelf back (2)

### Shelving (Wood)

- Shelf locators are used to attach the shelves to the brackets
- Place two shelf brackets into each bracket
- Lay shelf down onto bracket in desired position and press to adhere to locators
- An optional screw is provided with shelf locators if a fixed connection is desired



### O-Boxes

- Uprights are spaced 24" apart for O-Boxes
- Insert the O-Box bracket into the inside slot of each upright
- If installing a stack of O-Boxes, install the bottom O-Box first
- If installing O-Boxes side-by-side, each O-Box will have its own set of uprights